

MATCHLINE STA 160+17.63 (SHEET 2)

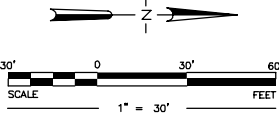
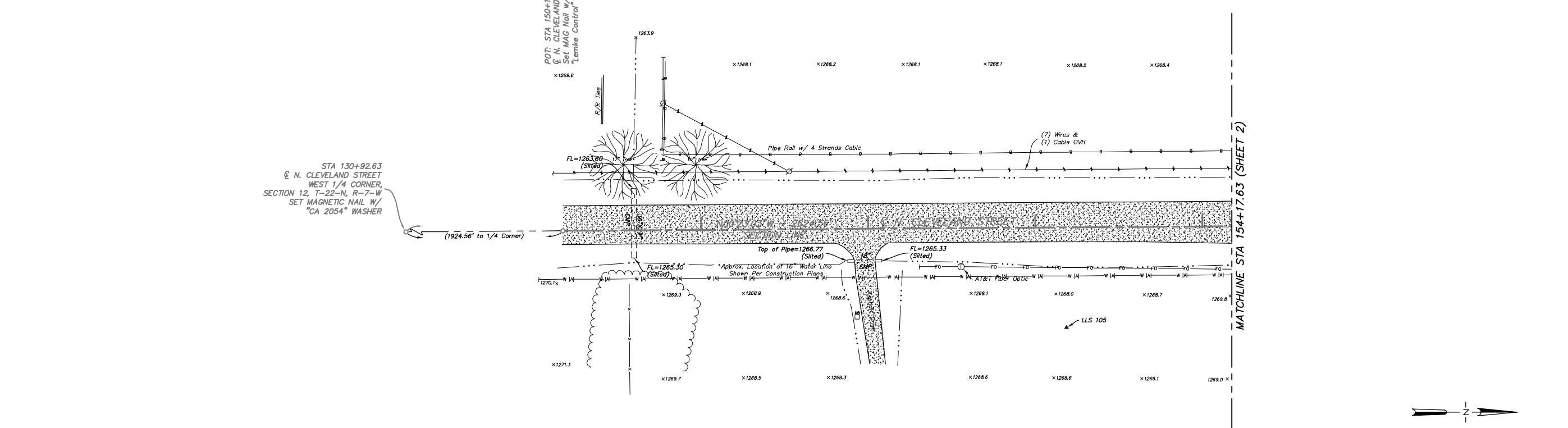
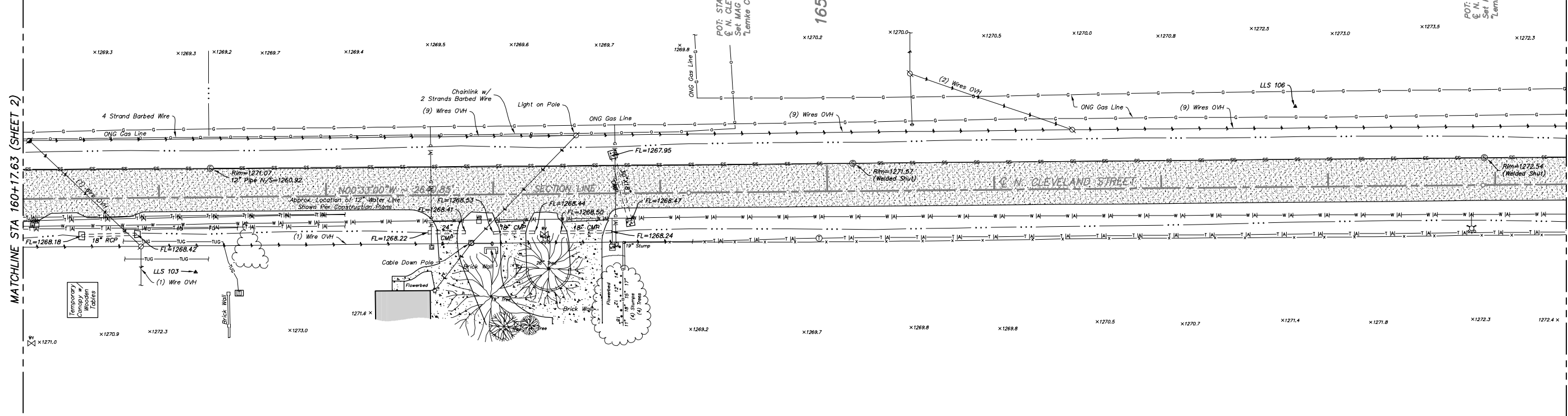
MATCHLINE STA 169+41.71 (SHEET 5)

SE/4 SECTION 2  
T-22-N, R-7-W, I.M.

SW/4 SECTION 1  
T-22-N, R-7-W, I.M.

NE/4 SECTION 11  
T-22-N, R-7-W, I.M.

NW/4 SECTION 12  
T-22-N, R-7-W, I.M.



**LEIMKE LAND SURVEYING, INC.**

S L  
S L

Additional Topo STA 164+17 to STA 163+58  
C/L CLEVELAND STREET  
Revised Topo STA 158+49 to STA 159+63  
C/L CLEVELAND STREET (Curb and Sidewalk)  
Added Survey Data Sheets (Sheets 7 thru 11)  
Revised Stationing of Centerline Alignments and all labels associated to the centerline stationing

Mark	Date	Description
1.	07/17 MB	
2.	07/17 MB	
3.	07/20 MB	
4.	04/16 MB	

Surveyed By: DR/CG  
Drawn By: TG  
Approved By: MB  
Date: 04/02/2013  
Scale: 1" = 30'  
Project No: 13025

TOPOGRAPHIC SURVEY  
PROPOSED ROAD IMPROVEMENTS  
INTERSECTION OF N. CLEVELAND STREET & W. CHESTNUT AVENUE  
ENID, OKLAHOMA  
TETRA TECH, INC.  
119 N. ROBINSON AVENUE, SUITE 700, NORMAN, OK 73102

Sheet Number  
**4**  
Sheet 4 of 11

3228 BART CORNER DRIVE, NORMAN, OK 73072  
PH: (405) 366-8841 FAX: (405) 366-8840  
http://www.leimke-ls.com